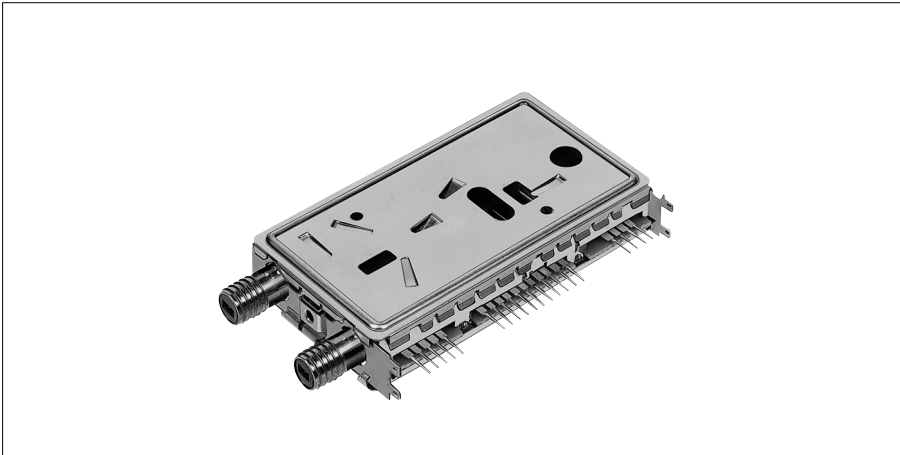


3イン1高周波ユニット TMDH/TMDJシリーズ

3-in-1 High-Frequency Units

TMDH/TMDJ Series

モジュレータ部にPLL方式を採用し、さらに容積比25%減の小形化を実現。
Volume cut by 25% , PLL system in modulator section.



■特長

- 当社TMDシリーズと比較し、容積比25%減の小形化。
- +B電圧は、5V標準であり、PLLおよびモジュレータの+Bと同一電圧の5V。
- 選局方式は、PLL ICを内蔵した周波数シンセサイザ方式。
- F-コネクタが筐体の最小面にあるため、セットの背面パネルに有効活用。
- USAチャンネルは、EIA規格IS-10、新FCC、新DOCの対応可能。

■用途

- VTR

■Features

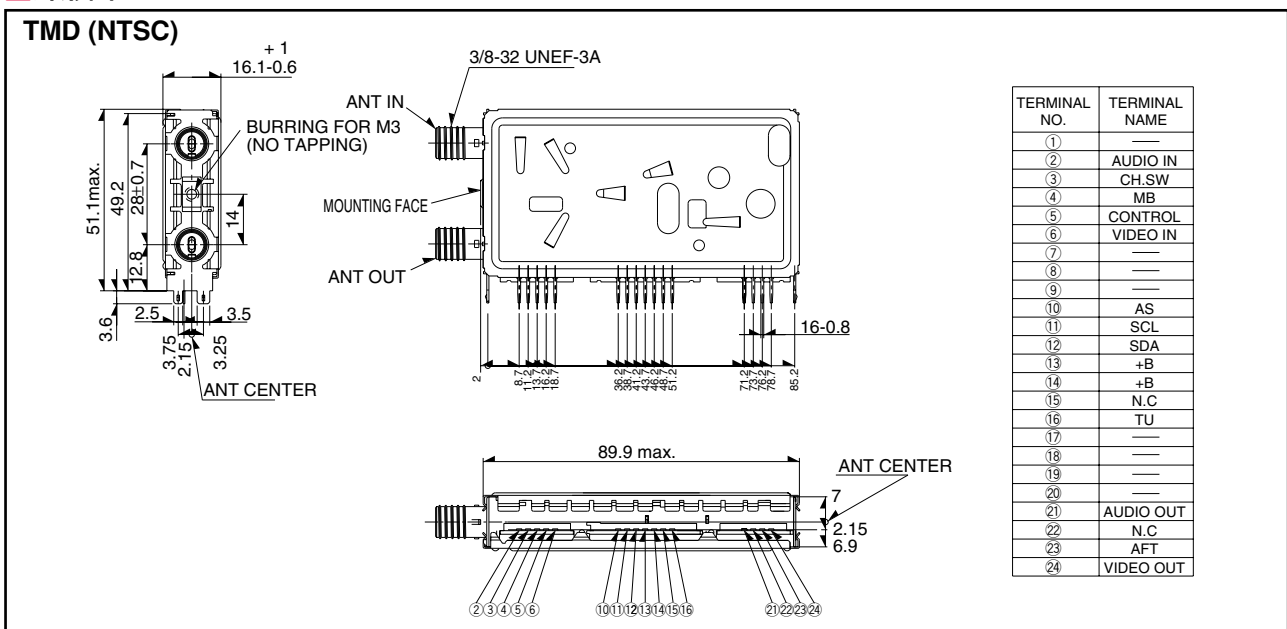
- Compact design with 25% smaller volume than the TMD series.
- +B voltage of 5V as standard, with the same 5V voltage for the PLL and modulator.
- Station selection using the frequency synthesizer method with a built-in PLL IC.
- F connector fixed on the smallest side to allow efficient use of the rear panel of the set.
- Supported US channels are EIA-standard IS-10, new FCC and new DOC.

■Applications

- VCR

■外形図 Dimensions

Unit : mm



注記
Note



このマークのついている製品は、日本生産のほか、海外生産も行っております。
The products with this mark are produced in Japan and overseas.

電氣的仕様 Electrical Specifications
at +B=5V

Items		Unit	U.S.A. 181 channel	Japan CATV channel
Model			TMDH	TMDJ
Receiving channel	VHF Low	CH	2~B	1~M10
	VHF High	CH	C~W+11	M4~S30
	UHF	CH	W+12~69	S31~62
Intermediate frequency	Picture	MHz	45.75	58.75
	Sound	MHz	41.25	54.25
Input impedance	ANT IN	Ω	75 unbalanced	75 unbalanced
	Video IN	k Ω	1 typ.	1 typ.
	Audio IN	k Ω	10 min.	10 min.
	Control	k Ω	30 min.	30 min.
Output impedance (load)	ANT OUT	Ω	75 unbalanced	75 unbalanced
	Video Out	k Ω	10 (Load)	10 (Load)
	Audio Out	k Ω	100 (Load)	100 (Load)
RF modulator block	Video Modulation (1Vp-p)	%	77 typ.	77 typ.
	Audio Modulation (-3.9dBs)	%	70 typ.	70 typ.
	Audio S/N	dB	50 typ.	50 typ.
	Output Level	dB μ	66 typ.	66 typ.
ANT. SW block	Insertion Loss	dB	5 typ.	5 typ.
	Isolation	dB	65 typ.	65 typ.
Demodulator block	Video Output Level (Color Bar 87.5% mod.)	Vp-p	1.0 typ.	1.0 typ.
	Audio Output Level (400Hz, ± 7.5 kHz dev.)	mVrms	140 typ.	140 typ.
	Video S/N (at 70dB μ ANT Input)	dB	48 typ.	48 typ.
	Audio S/N (at P/S=6dB)	dB	50 typ.	50 typ.
	Noise Limited sensitivity (at Video S/N=30dB)	dB μ	45 typ.	45 typ.
	AFT Center Voltage	V	2.5 typ.	2.5 typ.

印加電圧 Supply voltage

Terminal	Supply voltage		
CH. SW	Open GND	Japan CH.1 Japan CH.2	U.S.A. CH.3 U.S.A. CH.4
MB	5V		
CONTROL	2.5V~5V 0.5V max.	Video mode TV mode	
TU	32V		
+B	5V		

TV Tuner

3-in-1 2-in-1 RF Units

BS Tuner

BS/CS Converter/BS Tuner for digital broadcasting

CATV Tuner for digital broadcasting

Terrestrial Tuner for digital broadcasting

RF Modulator

FM/AM TUNERS for Home-use

FM/AM TUNERS for Car-use

GPS ANTENNA for CAR NAVIGATION